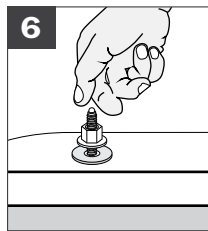


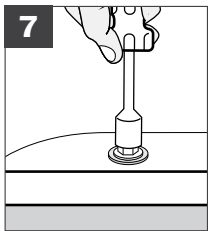
# PlumbPerfect™

## » Nylon Closet Bolt

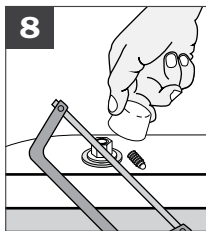
1. Preload bolts to the closet flange.
2. Place wax ring on the closet flange (most preferred) or on underside of bowl.
3. Set bowl over bolts, flange and wax ring.
4. Push down on bowl until the wax gasket compresses, making sure the bowl's rim contacts the floor.
5. Place cover cap-lock washer over bolt (correct side up). Cover cap-lock washers come with new tank/bowl combos or can be purchased separately.



6  
Thread nuts onto bolts until hand tight.



7  
Tighten nuts with 1/2" nut driver 1 to 2 full turns.



8  
Cut off excess bolts and snap on cover cap.

#IS-425 PlumbPerfect – 9/18

Supply

Drainage

Support

Specialties

[www.siouxchief.com](http://www.siouxchief.com)

14940 Thunderbird Road  
Kansas City, MO 64147  
P 1.800.821.3944  
F 1.800.758.5950

